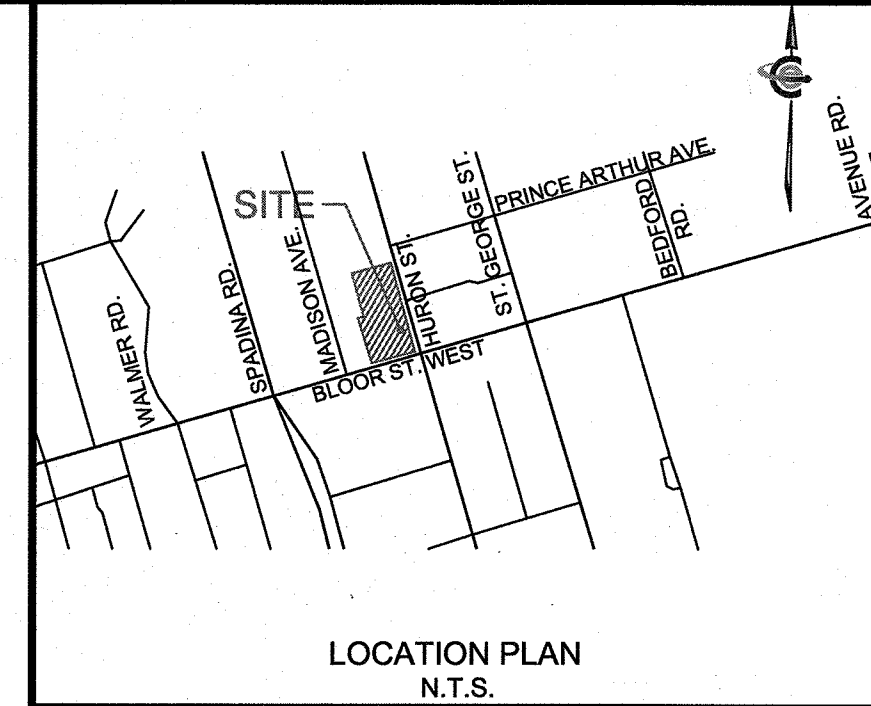
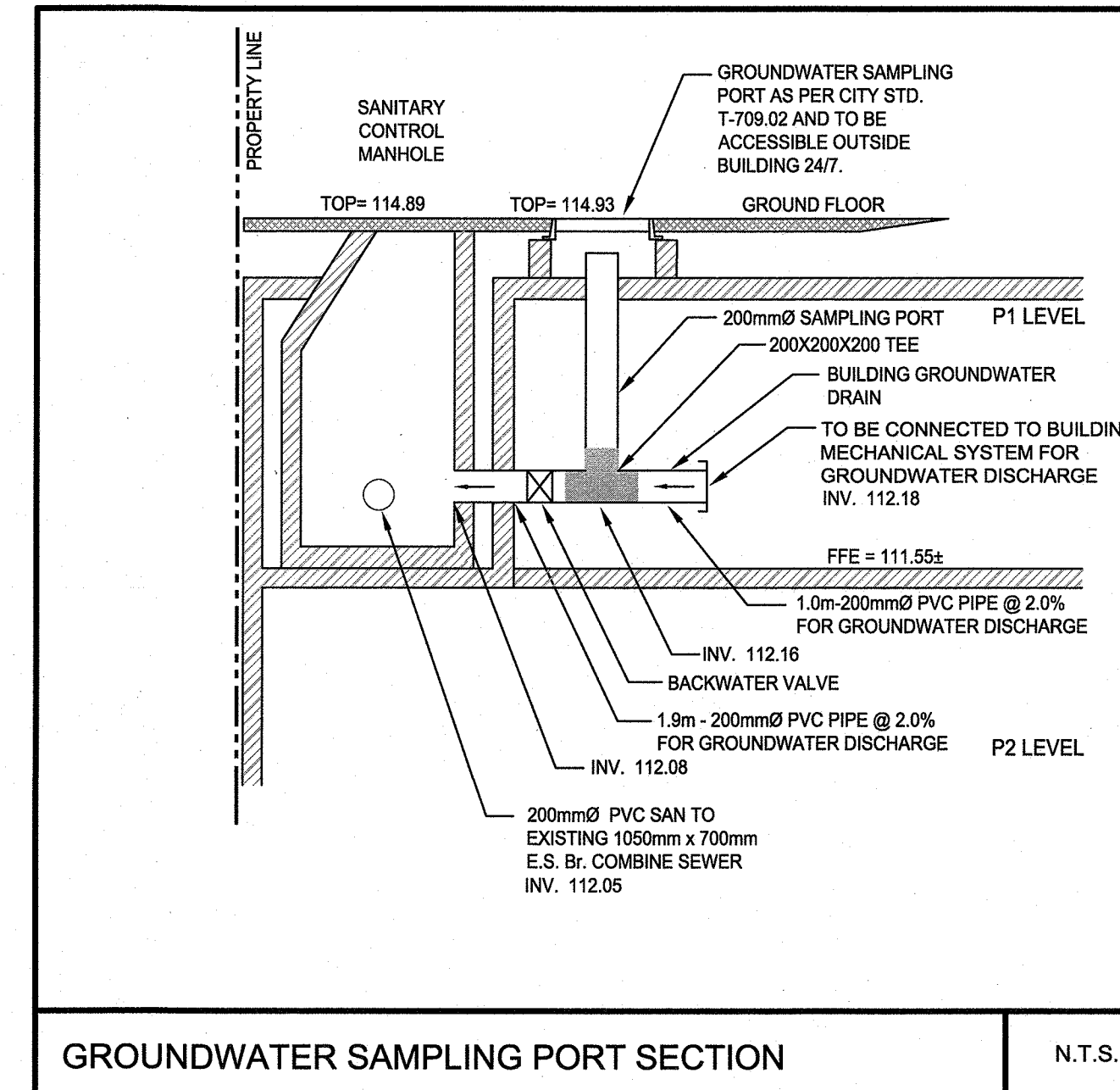
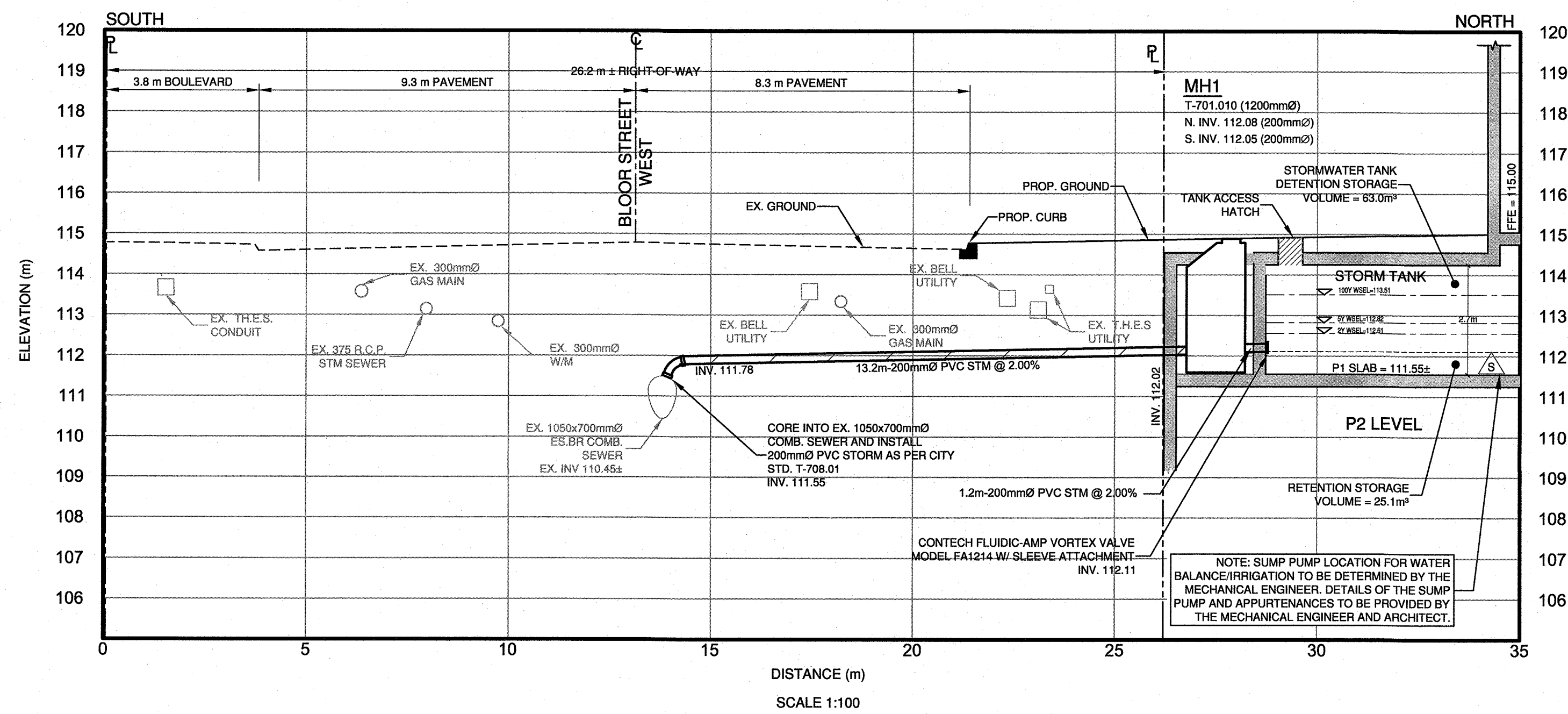
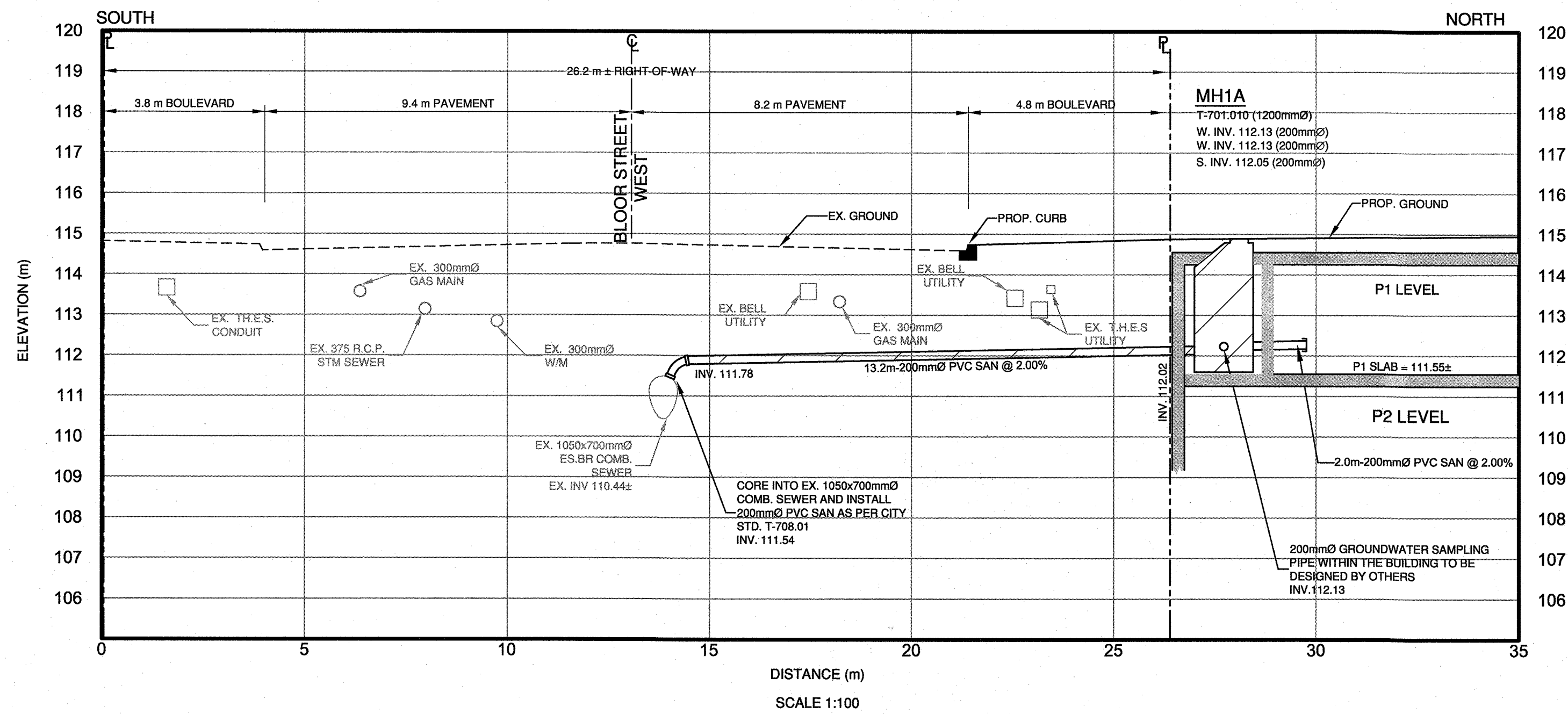


**SECTION A-A BLOOR STREET (STORM CONNECTION)**

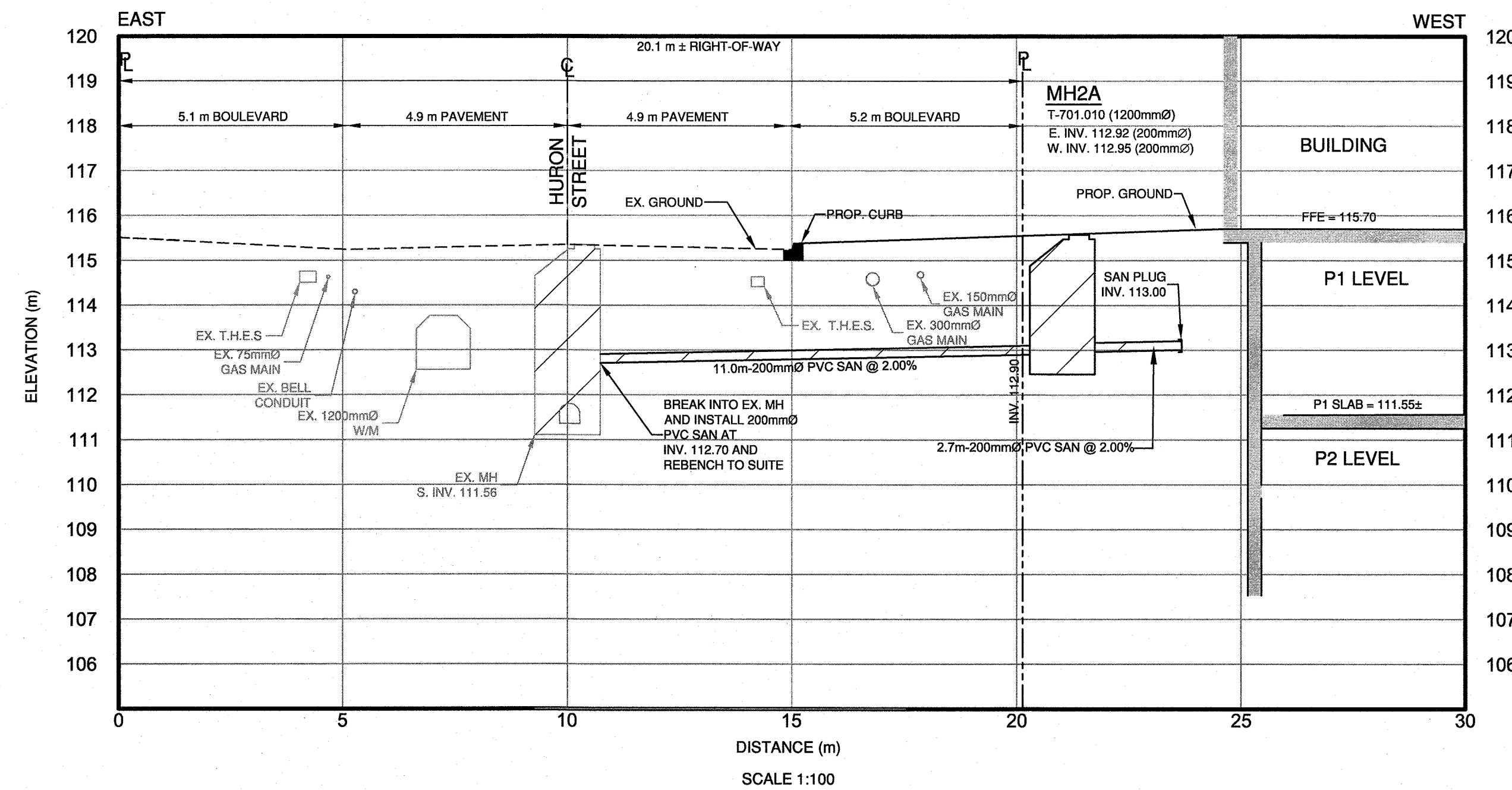


**LEGEND**

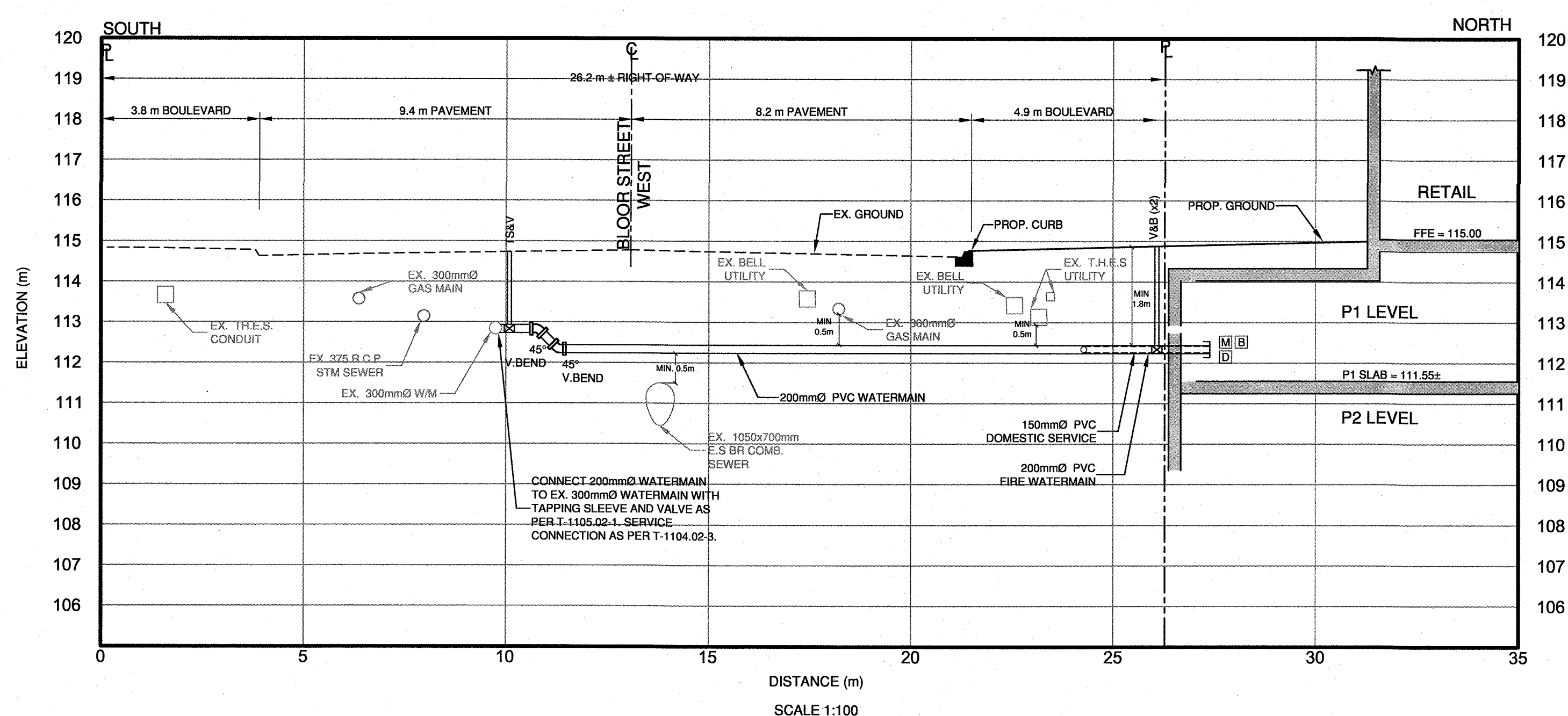
**SECTION B-B BLOOR STREET (SANITARY CONNECTION)**



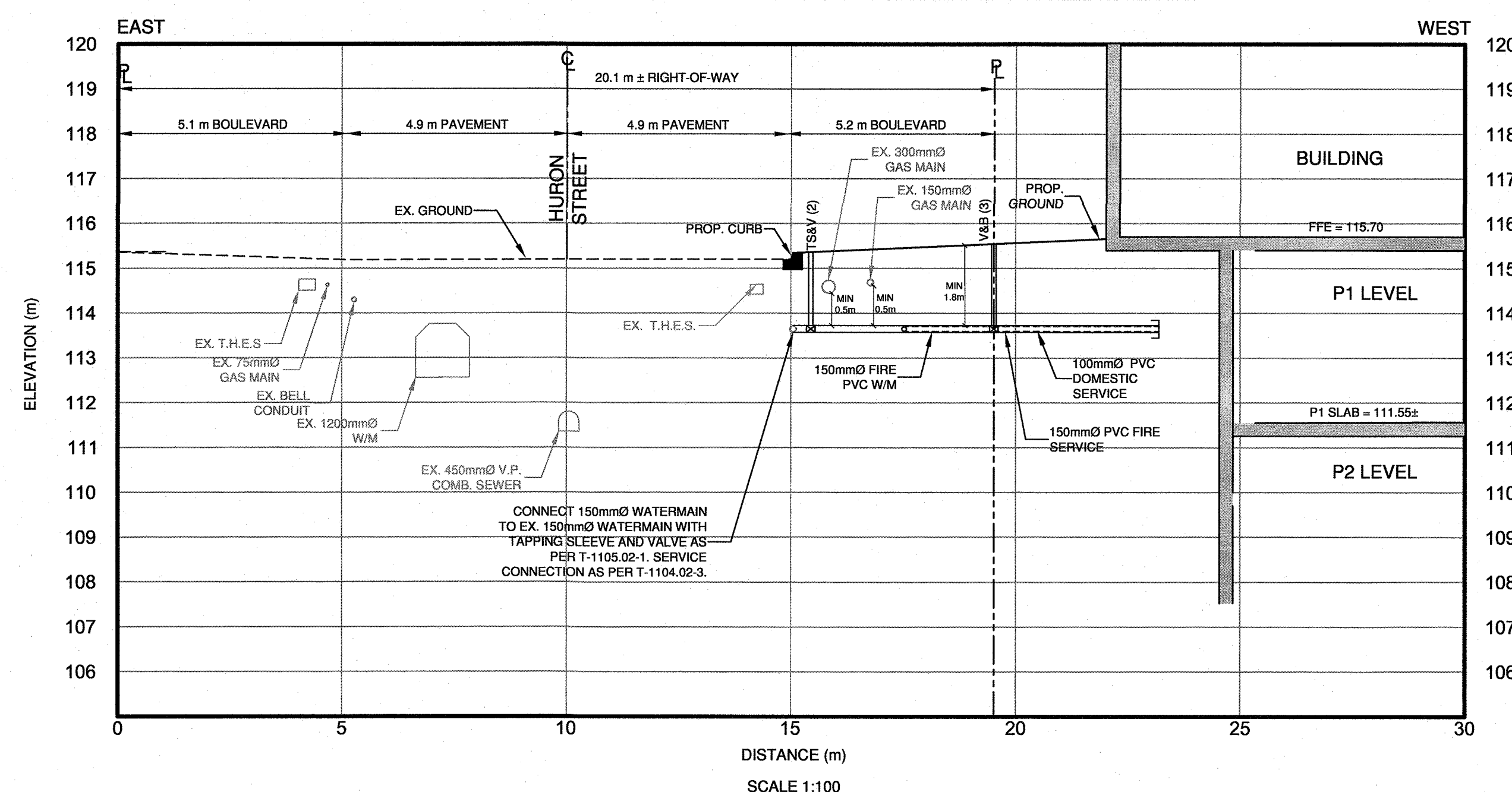
**SECTION D-D HURON STREET (SANITARY CONNECTION)**



**SECTION C-C BLOOR STREET (WATER CONNECTION)**



**SECTION E-E HURON STREET (WATER CONNECTION)**



SURVEY INFORMATION	BENCHMARK
J.D. BARNES LTD. 565 BRYNE DRIVE, UNIT E SARIEE, ON L4N 5Y3 PHONE: (705) 739-6770 FAX: (705) 739-6771	ELEVATIONS SHOWN HEREON ARE GEODETIC AND ARE REFERRED TO THE CITY OF TORONTO BENCHMARK No. CT1028, HAVING AN ELEVATION = 116.563 metres.

SITE PLAN INFORMATION	LIST OF DRAWINGS
KPBM ARCHITECTS 322 KING ST. W. 3RD FLOOR TORONTO ON M5V 1J2 PHONE: (416) 997-6104	SS-01 (SITE SERVING PLAN) SG-01 (SITE GRADING PLAN) EG-01 (EROSION CONTROL PLAN) DD-01 (DETAIL DRAWINGS) DD-02 (CROSS SECTIONS)

DIGITAL INFORMATION

NO.	DATE	REVISION	MP	JCL	INIT.	SIGNED
2.	MAR. 07, 2019	RE-ZONING SUBMISSION			MK	JL
1.	DEC. 15, 2017	RE-ZONING SUBMISSION			MP	JCL

**COLE ENGINEERING**  
70 VALLERWOOD DRIVE, MARKHAM, ON L3R 4Y3  
T: 416.967.9191 | F: 905.945.6161 | P: 905.945.2084

**PROFESSIONAL ENGINEER**  
S. K. LEE  
100212879  
PROVINCE OF ONTARIO

**Toronto** ENGINEERING & CONSTRUCTION SERVICES DIVISION  
ACCEPTED TO BE IN ACCORDANCE WITH THE CITY OF TORONTO STANDARDS.  
THIS ACCEPTANCE IS NOT TO BE CONSTRUED AS VERIFICATION OF ENGINEERING CONTENT.

DESIGN	MP	DRAWN	GY	CHECKED	JCL	CONTRACT No. -

MANAGER, DEVELOPMENT ENGINEERING DATE

**CROSS SECTIONS**  
300 BLOOR STREET WEST  
LOTS 46 AND 47 AND PARTS OF LOT 1 AND 2  
CITY OF TORONTO

SCALE: 1:100 DRAWING NUMBER DD-02  
DATE: DEC. 2017 PROJECT No.: 2017-0637

S:\2017 Projects\2017-0637-300 Bloor Street West Re-development\400-CDD\01-5001-Site-Sector or 30\Sheet\2017-0637-Site-Sector-01.dwg (DD-02) Mar 07, 2019 2:25pm By: mads8